



We've Got It Covered

**Resin Bound &
Bonded Specialists**

Welcome

A beautiful bespoke permeable driveway, patio or garden path is the ideal way to add kerb appeal to your property.

Our experience in designing and knowledge of installation is second to none; stretching across the widest range of permeable ground surfacing and incorporating endless ranges of designs.



About us

The Resin Mill are an award winning company, specialising in the training and supply of resin bound, bonded and wet pour materials. We are the largest and most trusted resin bound supplier in the UK, with our strong reputation built as a result of supplying some of the highest quality materials on the market, alongside an outstanding level of service. We work together with first class resin bound installation companies across the UK to make sure resin installs are achieved to the highest standards. At The Resin Mill we offer an approved contractor scheme to allow homeowners access to the highest quality materials with a contractor they can trust.



Who we supply to

As the largest resin bound supplier in the UK, we supply over 900 contractors and supply resin systems to major builders merchants such as Jewson, a large number of councils across the UK for their large social housing projects and also to industry professionals such as architects and surveyors. The versatility of our natural decorative landscaping products enable us to encompass a wide range of applications, from small domestic driveways to large multi-million pound commercial projects. Resin bound surfacing is ideal for both new build and home improvement projects and provides endless design possibilities for builders and developers, homeowners, landscapers and architects.

Our promise

You can be confident in the quality of the materials we supply and the service and help we offer to all our contractors. We strive to continuously evolve our range of resin bound products so that we are always the number one choice for your permeable paving, using the most technologically advanced resin and quality aggregate. Our permeable paving is eco-friendly, durable and highly decorative, with the most attractive and sort after colour mixes in the industry, you know you're in safe hands.



Contents

1	Welcome
2	About The Resin Mill
3-4	The Quality Of Our Materials & Service
5	Why Our Resins Are The Best
6	Resins Explained
7	Resin Bound Vs Resin Bonded
8	The Aggregates In Our Mixes
9-10	The Aggregates In Our Mixes
11-16	Colours Used With Standard Resin
17-22	Colours Used With UV Stable Resin
23-24	Testimonials
25	Our Service
26	Tree Pits
27-28	Wet Pour & Rubber Mulch
29	Drive Restore
30	Samples
31-32	The School Of Resin
33	Our Associations
34	Accredited Installer Scheme
35	Sustainability & SuDS
35	The Key To A Great Install
37	Our Client Base
36	Why Not Pop In And See For Yourself



The quality of our materials

We have carefully sourced 100% natural stone, mined from the finest quarries across the UK and Europe to ensure longevity and consistency of supply. We have spent an extensive period of time experimenting and testing different aggregate mixes and conducting market research in order to bring to you the best looking and most sought after resin bound mixes on the market.

Our resins utilise the latest polymer technology, which produces stronger bonds and therefore gives a resilient and robust surface that has longevity and durability, unlike any other in the industry. Our polyurethane based system has been put through vigorous testing alongside the different resin bound suppliers on the market, in order to confirm it's superiority.

This includes strength assessments on all mixtures and anti-slip testing, so that the full spectrum of the performance of the resin is covered for both domestic and commercial installations. The result is a flexible yet strong resin that is easy to work with, offering a highly cosmetic seamless anti-slip finish.

We are committed to working with our customers and suppliers to constantly improve our products and bring innovative solutions to their needs.



Why choose resin over block paving, concrete, flags or tarmac?

As well as having a highly cosmetic finish with outstanding kerb appeal, resin is over 10 times more eco-friendly in comparison to concrete. Most importantly it allows water to drain naturally through the finished surface, reducing puddles and slippage. This conforms to the SuDS (Sustainable Urban Drainage Systems) legislation and also means planning permission is not required for resin bound driveways. Resin bound is a surface with very high anti-slip properties and it is weed resistant, meaning no more maintenance.

Our outside space has been completely transformed within a week. A seamless service from start to finish.

Mr & Mrs Pearson, Harrogate



The quality of our service

We supply all the resin materials that are needed to fulfil a successful, high quality installation. We are a one-stop-shop, with all of your supplies available under one roof and in kit format, for a streamlined supply chain, all in one delivery. All of our samples are made in house so we can colour match and produce bespoke made-to-order samples. Our materials are kept indoors in our large warehouse and with full stock levels; they are available for next day delivery.

The outstanding personal service we offer has been a key factor in our success, as we continue to exceed expectations in customer care and technical advice.

We base our philosophy on building partnerships with existing customers and newcomers to the industry alike giving them all the help and support they need to break in to the industry and nurture their growth in a rapidly expanding market.

Why Our Resins Are The Best In The Business

Whilst we recognise that both installation and workmanship play a critical role in laying beautiful, permeable resin bound paving, the quality of the materials used are also imperative, specifically the resin. The Resin Mill has spent significant time conducting research and development in the laboratory, experimenting with the different resin bound mixtures on the market, in order to manufacture the highest quality resin available. This has allowed us expert status in the field.

The specially formulated polyurethane based system we have developed for resin ground surfacing has excellent chemical properties with an ultra strong adhesive, allowing you to have a surface that will last for years to come, unlike any other in the industry. Our resins are high grade and no solvents are used throughout our highly controlled manufacturing process.

ResinBound Pro

The ResinBound Pro product is one of the most refined Non-UV stable products on the market. It is inherently different to other standard resins on the market due to its colour activator.

Other manufacturers isocyanate (the activator), is a tar brown colour, leaving a dark brown resin residue on the surface within days. This changes and dulls the aggregate colour, diminishing the visibility of the natural stone below. The composition and refined manufacturing process of our ResinBound Pro means it is a lot lighter in colour.

Because of this, when it is laid there is less colour change enabling the aggregate to hold its original colour properties so you can still see the natural veins in the aggregates, offering a superior appearance on your driveway.

ResinBound UVR Pro

Our ResinBound Pro UVR is manufactured to even higher standards in comparison to our ResinBound Pro product; using high quality A-Grade materials, it is far more refined and is therefore a far superior product. UV stable resin has resistant tough polymers to make it durable but it is also flexible and elastic so it can withstand more resistance in comparison to Non-UV stable resin.

ResinBound Pro UVR is the professional's choice as it gives contractors the ability to lay a larger range of colours and increases trowel time. Due to its UV stable qualities it will not yellow and can therefore be used with all of our aggregate colours to offer a premium finish.



Resins Explained

Aliphatic - ALI

This is the professional's choice, UV stable offers a longer working time and superior flexibility. Our Resin Bound UVR Pro product is refined to ensure that your final surface isn't affected by colour change in UV light.

This clear resin can be used to install a wider range of aggregates and makes tool cleaning faster and easier.

Aromatic - ARO

These resins are more economical in cost compared to UV stable resins as they are less refined.

This results in colour change within the resin itself that happens gradually over a number of weeks. Although this colour change may be acceptable for certain golden aggregates, this type of resin can't be used with black, silver or beige colours.

Aromatic resins usually offer less flexibility than their aliphatic counterparts however they are still suitable for use for driveways, paths and patios and offer a solution for the more price conscious client

Technical data sheets

Full technical data sheets as well as health and safety data sheets are available for all the products that we supply.

As a conscientious supplier we also carry out anti-slip testing, strength testing and test our resins against other manufactures to ensure we supply a product that you can rely on.

Resin Bound vs Resin Bonded

The difference between Resin Bound and Resin Bonded

Features	Bound	Bonded
Permeable	✓	✗
SuDS compliant	✓	✗
Hard wearing	✓	✗
UV stable	✓	✗
Smooth	✓	✗
Slip resistant	✓	✓
Low maintenance	✓	✓
Eco friendly	✓	✓
Information	<p>Resin bound systems are the most popular decorative surface available due to the smooth surface, uniform appearance and durability.</p> <p>Due to the way it is laid, it is a highly porous paving solution for ground surfacing, which is SuDS compliant.</p> <p>The resin bound surface is formed by mixing a choice of aggregates together with specialist resin. This mix is then hand troweled to give a smooth flat surface that is hard wearing yet flexible and crack resistant.</p>	<p>A resin bonded system is laid in a different manner to resin bound. It involves applying a layer of resin on to an existing surface, where aggregates are scattered on top of, mimicking the appearance of loose gravel.</p> <p>While a hard surface is achieved, the surface is not entirely covered in resin, so the top layer of stone is subject to exposure and thus wearing.</p> <p>Only 1-3mm aggregates should be used for resin bonded surfacing.</p>
Appearance		

The Aggregates In Our Mixes

We select the finest kiln dried aggregates for our range, which have been thoughtfully combined together to form our fantastic resin bound colours providing outstanding kerb appeal.

Although the aggregates have different properties, we have methodically selected them to complement each other from not only an aesthetic point of view but also a performance and strength perspective.

We offer a made-to-measure service and can colour match and create bespoke colours for your project should you require a unique design.

As a one-stop-shop, delivering everything you need for your resin project in kit format. With all our products being available under one roof, your resin project materials are delivered at the same time to site, reducing downtime and increasing a more streamlined critical path. Simple, quick and easy, we've got it covered.

Product conformity

Whilst we take every measure to ensure that all batches of aggregate colours are as consistent as possible, the aggregates we supply are natural materials that are mined from a rock face. With this in mind, they can be subject to colour change.



The Aggregates In Our Mixes



Amber Gold
1-4mm



Autumn Gold
1-3mm



Autumn Gold
2-5mm



Autumn Quartz
1-3mm



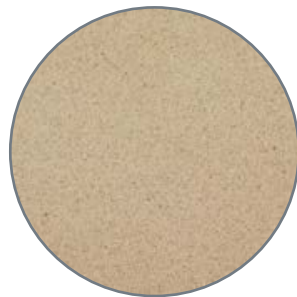
Autumn Quartz
2-5mm



Beige
2-5mm



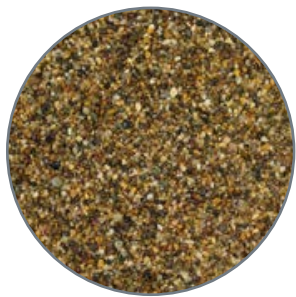
Black
2-5mm



C52
Sand



Copper Slag
1-3mm



Golden Pea
1-3mm



Golden Pea
2-5mm



Golden Pea
10mm



Golden Quartz
2-5mm



Green
1-3mm



Green
2-5mm



Pearl Quartz
1-3mm



Pearl Quartz
2-5mm



Red
1-3mm



Red
2-5mm



Circus
6mm



Silver
1-3mm



Silver
2-5mm



Silver
10mm



Staffordshire Pink
2-5mm



Staffordshire Pink
1-3mm

Anti-Slip

The Resin Mill are safety led. As pioneers in the slip resistance field we have ensured all our surfaces exceed safety expectations with independent testing conducted in order to meet BS 7976-2 guidelines.

The Health and Safety Executive/Health and Safety Laboratories have determined the probability of floor slip should be a minimum of 1 in a million footfalls. The test carried out for anti-slip is a ‘Pendulum Test Value’ (PTV) and a

minimum PTV of 36 relates to this probability in rating. All The Resin Mill colour mixes significantly passed the PTV test when installed with 100g of crushed glass per square meter.

The lowest wet rating PTV of our resin bound colours based on the wettest surface and at worst possible gradient has been given next to ‘Slip Resistance (PTV)’. The larger the value, the better the slip resistance.

Colour mixes that can be used with our **Resin Bound Pro** and **Resin Bound UVR Pro** products...

Cappuccino

An assembly of the finest French aggregates, affective as a standalone piece but can also be complimented by borders of our Marble Crema. The varying size of resin gravel adds dimension and texture as well as providing a solid interlocking surface. It can be used with either our standard resin bound products or our Resin Bound UVR Pro products.

Slip Resistance (PTV):	74
Rock Type:	Quartzite & Quartz
Rock Shape:	Naturally Round
Hardness Rating:	★★★★★
Ideal for:	Driveways, Paths, Patios
Overall Performance:	★★★★★



All our resin bound colours should be installed with 100g worth of crushed glass per sq m in order to reach the given Slip Resistance value (PTV).

Spring Haze

This golden, polenta white, red and brown fusion is one of the most popular resin bound colours. It is a traditional choice and is often located around properties in the Cotswold areas as it highly flatters the stone properties. It can be used with either our standard resin bound products or our resin bound UVR Pro products.

Slip Resistance (PTV):	74
Rock Type:	Quartz
Rock Shape:	Naturally Round, Some Angular
Hardness Rating:	★★★★★
Ideal for:	Driveways, Paths, Patios
Overall Performance:	★★★★★



Sunset Garden

A resin bound colour that is transferable for most applications. It looks remarkable with bricked edging and compliments any existing coloured brick already in place and picks out the veins in natural stone. It can be used with either our standard resin bound products or our resin bound UVR Pro products.

Slip Resistance (PTV):	79
Rock Type:	Quartzite & Quartz
Rock Shape:	Naturally Round
Hardness Rating:	★★★★★
Ideal for:	Driveways, Paths, Patios
Overall Performance:	★★★★★



Evening Rose

This auburn coloured compilation is a favourite with traditional properties. With a mix of red and golden hues, it includes nicely rounded shiny pebbles and granite stone, radiating a luxuriant finish. It compliments red brick properties remarkably well. It can be used with either our standard resin bound products or our resin bound UVR Pro products.

Slip Resistance (PTV):	78
Rock Type:	Quartzite, Quartz & Granite
Rock Shape:	Naturally Round, Some Angular
Hardness Rating:	★★★★★
Ideal for:	Driveways, Paths, Patios
Overall Performance:	★★★★★

Colour mixes that can be used with our **Resin Bound Pro** and **Resin Bound UVR Pro** products...

Olympus

Colour tones of gold and grey, a beautiful mix of highly complimentary stones giving a jewelled affect. A common choice for coastal areas where there is substantial stone and rendered property. It can be used with either our standard resin bound products or our resin bound UVR Pro products.

Slip Resistance (PTV):	76
Rock Type:	Quartzite & Dolomite
Rock Shape:	Naturally Round, Some Angular
Hardness Rating:	★★★★★
Ideal for:	Driveways, Paths, Patios
Overall Performance:	★★★★★



All our resin bound colours should be installed with 100g worth of crushed glass per sq m in order to reach the given Slip Resistance value (PTV).

Transcendence

A gorgeous combination of red and golden aggregates creating a warm tone. Transcendence has great definition and texture. Contrast against strong colours and compliment with plain borders of beige or red colours. It can be used with either our standard resin bound products or our resin bound UVR Pro products.

Slip Resistance (PTV):	76
Rock Type:	Quartz & Granite
Rock Shape:	Angular
Hardness Rating:	★★★★★
Ideal for:	Driveways, Paths, Patios
Overall Performance:	★★★★★



Farmhouse Gold

A beautiful blend of Irish and German stone, offering a golden brown colour with a hint of gold. It is one of the most popular mixes as it compliments most properties. From an installation perspective it is pleasant to trowel due to the smoothness of the stone aggregates. It can be used with either our standard resin bound products or our resin bound UVR Pro products.

Slip Resistance (PTV):	80
Rock Type:	Quartzite & Quartz
Rock Shape:	Naturally Round, Some Angular
Hardness Rating:	★★★★★
Ideal for:	Driveways, Paths, Patios
Overall Performance:	★★★★★



Porto Fino

This duo colour offers a defined appearance and texture. The UK obtained gravels are angular in shape, creating a strong textured aesthetic. It can be used with either our standard resin bound products or our resin bound UVR Pro products.

Slip Resistance (PTV):	74
Rock Type:	Granite & Dolomite
Rock Shape:	Angular
Hardness Rating:	★★★★★
Ideal for:	Driveways, Paths, Patios
Overall Performance:	★★★★★

Colour mixes that can be used with our **Resin Bound Pro** and **Resin Bound UVR Pro** products...

Meadow

A mix of yellow and sandy coloured aggregates, giving a deliciously golden aesthetic and an exquisite appearance for any onlooker. It can be used with either our standard resin bound products or our resin bound UVR Pro products.

Slip Resistance (PTV):	73
Rock Type:	Quartz
Rock Shape:	Angular
Hardness Rating:	★★★★★
Ideal for:	Driveways, Paths, Patios
Overall Performance:	★★★★★



All our resin bound colours should be installed with 100g worth of crushed glass per sq m in order to reach the given Slip Resistance value (PTV).

Sweet Pea

A tight-knit fusion of natural golden colours. Troweling is easy because of the round nature of the pebbles. It is an attractive natural looking colour and is one of the best sellers, offering a charming finish. It can be used with either our standard resin bound products or our resin bound UVR Pro products.

Slip Resistance (PTV):	73
Rock Type:	Quartzite
Rock Shape:	Naturally Round
Hardness Rating:	★★★★★
Ideal for:	Driveways, Paths, Patios
Overall Performance:	★★★★★



Sweet Pea 10mm

A fusion of natural milk chocolate and golden coloured gravel, in a larger 10mm gradient. It can be used with either our standard resin bound products or our resin bound UVR Pro products for use with tree pits.

Slip Resistance (PTV):	73
Rock Type:	Quartzite
Rock Shape:	Naturally Round
Hardness Rating:	★★★★★
Ideal for:	Tree Pits
Overall Performance:	★★★★★



Rosso Luna

Naturally deep and burnished red in pigment, it is a strong exuberant colour originating from Scotland. For the best affect, contrast against other strong plain colours. It can be used with either our standard resin bound products or our resin bound UVR Pro products.

Slip Resistance (PTV):	78
Rock Type:	Granite
Rock Shape:	Angular
Hardness Rating:	★★★★★
Ideal for:	Driveways, Paths, Patios
Overall Performance:	★★★★★

Colour mixes that need to be used with our **Resin Bound UVR Pro** product...

Marble Crema (uv)

Creamy sand tones running throughout create an even and consistent finish. Perfect for use on paths or patios this light coloured stone is a real head turner and makes for a stand out feature. Our resin bound UVR Pro products must be used when installing this resin surface.

Slip Resistance (PTV):	74
Rock Type:	Marble
Rock Shape:	Angular
Hardness Rating:	★ ★ ★
Ideal for:	Paths, Patios, Light Footed Traffic
Overall Performance:	★ ★ ★



Summer Beach (uv)

This Mediterranean blend consists of gold and beige resin gravel giving a jewelled appearance, which is a simple easy way to brighten up any landscape. We recommend a large pressure is applied during application due to the angled nature of this stone blend. Our resin bound UVR Pro products must be used when installing this resin surface.

Slip Resistance (PTV):	79
Rock Type:	Quartzite & Granite
Rock Shape:	Angular
Hardness Rating:	★ ★ ★ ★
Ideal for:	Paths, Patios, Light Footed Traffic
Overall Performance:	★ ★ ★ ★

All our resin bound colours should be installed with 100g worth of crushed glass per sq m in order to reach the given Slip Resistance value (PTV).

Ireland Green (uv)

A colour palette of greens and beiges gives a varying dimension of stone, making this blend perfect for driveways. It is an elegant choice and looks fantastic with its speckled effect. Our resin bound UVR Pro products must be used when installing this resin surface.

Slip Resistance (PTV):	78
Rock Type:	Granite, Dolorite & Quartz
Rock Shape:	Naturally round & angular
Hardness Rating:	★ ★ ★ ★ ★
Ideal for:	Driveways, Paths, Patios
Overall Performance:	★ ★ ★ ★ ★



Grey Slate (uv)

An impressive grey colour that looks fantastic over larger areas. Tones of lighter grey are present throughout the mixture giving a misty slate look. Versatile and sophisticated this colour complements contemporary properties due to its modern palette. Our resin bound UVR Pro products must be used when installing this resin surface.

Slip Resistance (PTV):	75
Rock Type:	Granite & Dolorite
Rock Shape:	Angular
Hardness Rating:	★ ★ ★ ★ ★
Ideal for:	Driveways, Paths, Patios
Overall Performance:	★ ★ ★ ★ ★

Colour mixes that need to be used with our **Resin Bound UVR Pro** product...

Jet Black (UV)

A porous alternative to tarmac, our Jet Black colour will allow water to drain through giving a huge advantage by reducing drainage costs. This striking black twinned with a superfluous shine is perfect for resin bound borders or full driveway systems. Our resin bound UVR Pro products must be used when installing this resin surface.

Slip Resistance (PTV):	75
Rock Type:	Basalt
Rock Shape:	Angular
Hardness Rating:	★★★★☆
Ideal for:	Driveways, Paths, Patios
Overall Performance:	★★★★☆



All our resin bound colours should be installed with 100g worth of crushed glass per sq m in order to reach the given Slip Resistance value (PTV).

Midnight Moon (UV)

Midnight moon offers a warm homely aesthetic through its pink, maroon and brown pantones. Ideal for any modern property, this mixture can complement sandstones and white rendered walls perfectly. Our resin bound UVR Pro products must be used when installing this resin surface.

Slip Resistance (PTV):	78
Rock Type:	Quartzite
Rock Shape:	Mixed
Hardness Rating:	★★★★☆
Ideal for:	Driveways, Paths, Patios
Overall Performance:	★★★★☆



Purity (UV)

Purity is a solid choice if you are looking for a distinctive and eye catching project. There are amber colours and warm sand tones present, as well as silver speckles to give a dazzling colour. Our resin bound UVR Pro products must be used when installing this resin bound surface.

Slip Resistance (PTV):	78
Rock Type:	Granite & Quartz
Rock Shape:	Naturally Round & Angular
Hardness Rating:	★★★★★
Ideal for:	Driveways, Paths, Patios
Overall Performance:	★★★★★



Oyster Pearl (UV)

This deluxe medley is the epitome of opulence, consisting of silver and cream tones, producing an attractive pearl colour. It is one of the best sellers due to its transferability and luxurious aesthetic. Our resin bound UVR Pro products must be used when installing this resin bound surface.

Slip Resistance (PTV):	73
Rock Type:	Quartz
Rock Shape:	Naturally Round
Hardness Rating:	★★★★★
Ideal for:	Driveways, Paths, Patios
Overall Performance:	★★★★★

Colour mixes that need to be used with our **Resin Bound UVR Pro** product...

Merit (UV)

This red and silver granite stone finish is a unique combination and gives a project an excellent focal point. The UK sourced stone can add depth and flare to existing driveway, path or patio. Our resin bound UVR Pro products must be used when installing this resin surface.

Slip Resistance (PTV):	69
Rock Type:	Granite
Rock Shape:	Angular
Hardness Rating:	★★★★★
Ideal for:	Driveways, Paths, Patios
Overall Performance:	★★★★★



All our resin bound colours should be installed with 100g worth of crushed glass per sq m in order to reach the given Slip Resistance value (PTV).

Starlight (UV)

A combination of silver flecks and jet-black creates a sparkle that will infuse a touch of magic in to any project. Perfect for contemporary buildings this granite and basalt mixture adds instant kerb appeal. Our resin bound UVR Pro products must be used when installing this resin surface.

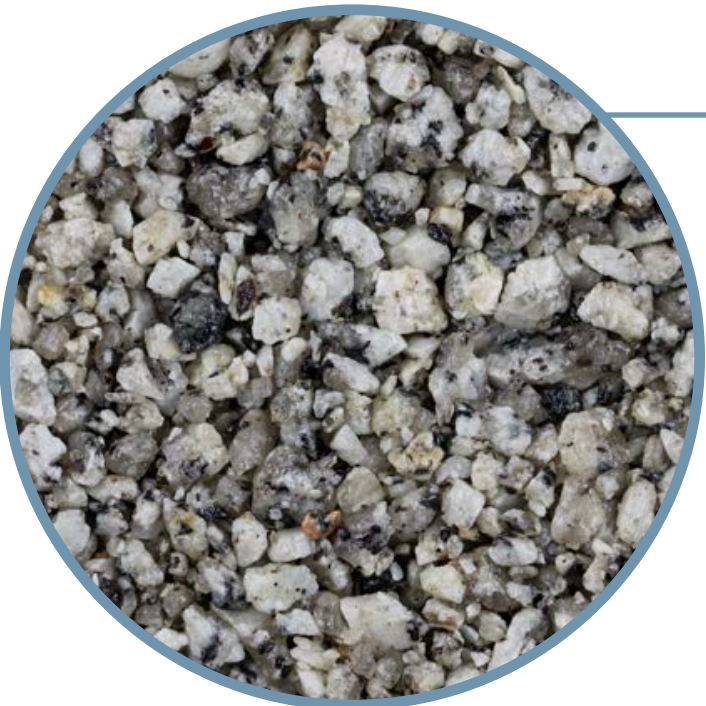
Slip Resistance (PTV):	81
Rock Type:	Granite & Basalt
Rock Shape:	Angular
Hardness Rating:	★★★★★
Ideal for:	Driveways, Paths, Patios
Overall Performance:	★★★★★



Sahara (UV)

An angular light sandy blend with flecks of silver offering a beautiful resin bound aggregate, brightening the overall look of buildings and landscapes. Our resin bound UVR Pro products must be used when installing this resin surface.

Slip Resistance (PTV):	72
Rock Type:	Quartz
Rock Shape:	Angular
Hardness Rating:	★★★★★
Ideal for:	Driveways, Paths, Patios
Overall Performance:	★★★★★



Titanium (UV)

A speckled silver mix that creates a modern and oriental feel. It is a harmonious colour that can be partnered with most colours and design patterns. Titanium is one of the favoured resin bound colours. Our resin bound UVR Pro products must be used when installing this resin bound surface.

Slip Resistance (PTV):	76
Rock Type:	Granite
Rock Shape:	Angular
Hardness Rating:	★★★★★
Ideal for:	Driveways, Paths, Patios
Overall Performance:	★★★★★

Testimonials

Each and every one of our clients are important to us, as is their opinion on how well we have worked with them. From small businesses to large multinationals, we've supplied it.

The Resin Mill have installed on national television shows and at some of the UK's most prestigious installs.

"We have worked with the guys for a while now and always find them helpful. They always have the stock you need and can't do enough for you."

MARK OAKWELL
(Oakwell Paving)

"The staff at The Resin Mill always give great customer service and achieve a fantastic end product, I am always pleased with the results."

KATIE RUSHWORTH
(Itv's Love Your Garden)

"The Resin Mill are the only supplier that I have used that I can contact before 2pm and have delivery on site the next day before 10am!"

NICK TURNER
(Turnabout Landscapes)

Our Service

Through 15 years of experience, The Resin Mill's service is seamless. We are highly knowledgeable and offer expert advice to experienced resin professionals and to novices alike. There is not a question that can't be answered and our sales and technical support is unrivalled.

The Resin Mill carry full stock of all your resin bound materials so that you don't have to look anywhere else and all your project requirements can be delivered at the same time, on the same carriage, early morning ready for preparation before you start. Everything is dispatched from our warehouse.

Our large warehouse based at St Pegs Mill allows us to react quickly to your requirements and hold premium stock levels to avoid disappointment. Our next day delivery service offers the option of having your resin bound materials delivered by tail lift on all day, before midday and before 10am services to

ensure your installation runs as smooth as possible.

We go above and beyond to offer the service that you deserve with our team available out of hours should you require.

We have convenient opening times to: We operate Monday through to Saturday, so that we can service any weekend project requirements. We are open from 7 in the morning to ensure our kits can be collected by contractors with enough time to be on site early doors. Our products can either be picked up or delivered direct to site. We deliver across the whole of the UK.

All of our samples are made in house so we can colour match and produce bespoke, made-to-order samples ready for next day delivery.



Professionalism | Award Winning | Excellent Customer Support & Aftercare

Tree Pits

Tree pits are typically laid with aggregates above 5mm. This is so that it creates an open texture and a highly porous surface, allowing for quicker drainage for water to feed to the roots and enabling access for air penetration.

If the root plate of the tree is covered by impervious paving, as most street trees are, vital gaseous exchange in the root zone cannot take place. It is therefore very important that they have aeration.

Resin bound tree pits are SuDS compliant. Edging details and optional collars can be installed around the base of the tree as required.

In order to allow the tree to grow, a protective tree collar can be filled with a higher ratio of aggregate to resin, leaving enough growing room of 20-25mm in width around the trunk.

Tree guards are another option that can be used in order to let the tree grow without being disturbed. In terms of foot traffic, for zero foot traffic at all, it can be laid at 25mm depth. For light foot traffic, it needs to be laid at 50mm depth and for heavy foot traffic it must be laid at 75mm depth.

Tree pits are trash resistant and any litter that may happen to accumulate on the surface of the resin bound tree pit can be easily swept off, vacuumed or jet washed away.



- Porous
- SuDS Compliant
- Low Maintenance
- No Stone Loss
- Continued Tree Growth
- Cosmetically Pleasing

Our Aggregates Suitable for Tree Pits:



Titanium
10mm



Circus
6mm



Sweet Pea
10mm



Oyster Pearl
5-8mm

Wet Pour

Wet Pour is a continuous recycled rubber surface that gives a high quality, hard wearing, slip resistant surface requiring little to no maintenance.

One of the main attractions of wet pour is that it is available in a wide range of colours and therefore design possibilities are unlimited.

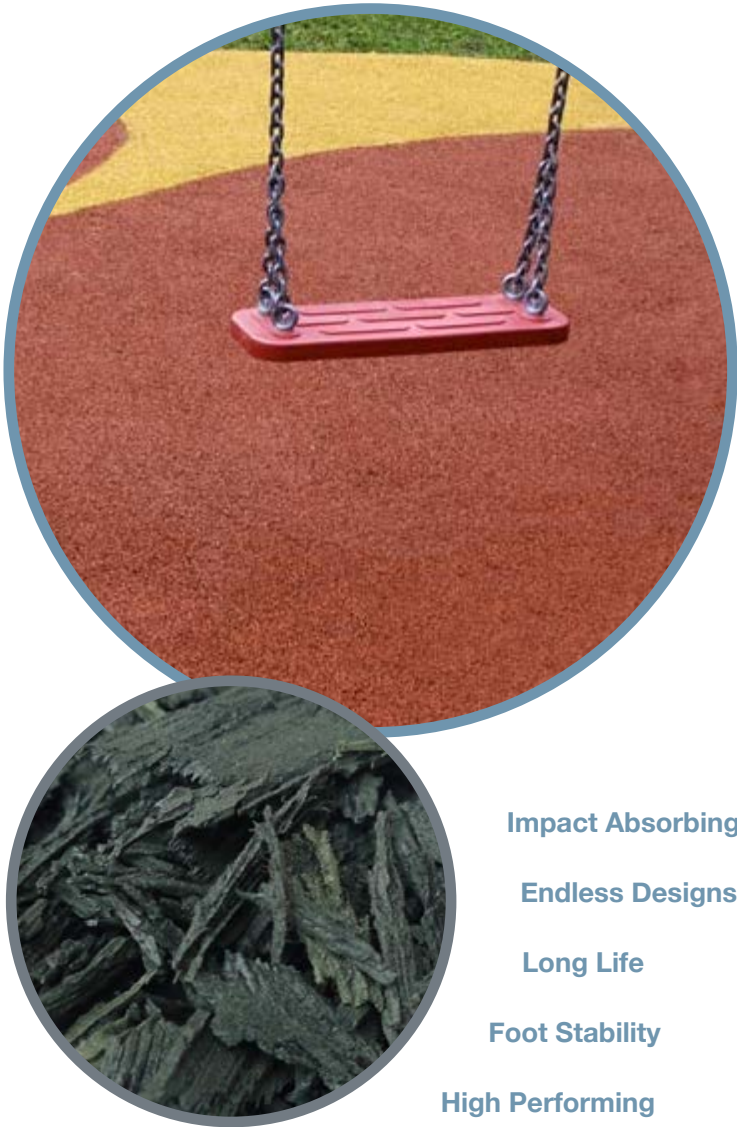
Wet pour surfaces offer a premier impact absorbing surface and a surface that can be used all year round. The seamless finish of the surface ensures that it is trip free, making it wheelchair friendly and suitable for children. It complies with safety standards and National and International guidelines.

The EPDM rubber is non-toxic, made from 100% recyclable materials, specialist pigment and UV stabilisers. It has a high elasticity and wear resistance and low density for excellent coverage. When installing wet pour, the EPDM granules and a binding agent of polyurethane resin mixture, are mixed on site and then laid wet to a certain depth.

This depth may vary from project to project, dependent on the critical fall heights. The wet pour material is porous and dries quickly, leaving a safe, clean and durable surface with minimum maintenance involved.

Rubber Mulch

Rubber Mulch has been designed to be eco-friendly and attractive. If a project needs a cost-effective option, rubber mulch should be considered, as it is an attractive surface that can be installed directly onto hardcore. It is still ideal for playgrounds due to its elasticity and it reduces fungus growth.



Impact Absorbing

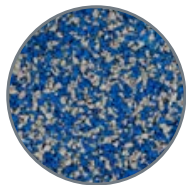
Endless Designs

Long Life

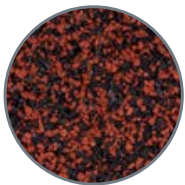
Foot Stability

High Performing

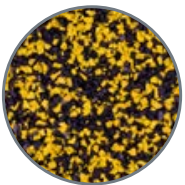
Wet Pour Surfacing Colours



Grey Fleck



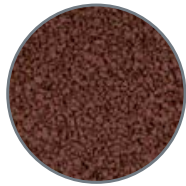
Black Fleck



Yellow Fleck



Beige



Brown



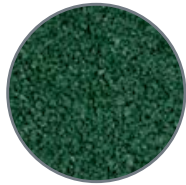
Bright Yellow



Dark Blue



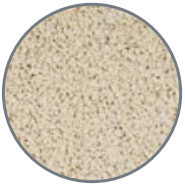
Earth Yellow



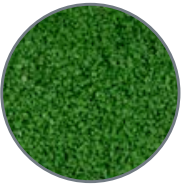
Dark Green



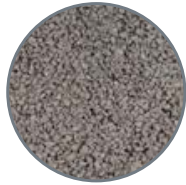
Light Blue



Eggshell



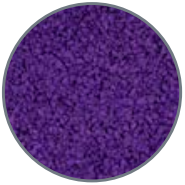
Light Green



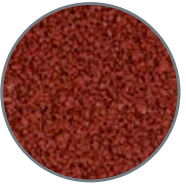
Light Grey



Orange



Purple



Red

Rubber Mulch Colours



Brown



Green



Red

Uses of Wet Pour Surfaces

- **Play Surfacing**
- **Safety Surfacing**
 - Nurseries
 - Schools
- **Golf Courses**
 - Tee Off Surfaces
 - Driving Ranges
 - Bunkers
- **Equestrian Facilities**
- **Sports Courts**
 - Tennis
 - Netball
 - Basketball
- **Athletics Tracks**
- **Outdoor Fitness Areas**
- **Health Facilities**
 - Hospitals
- **General Paving**
- **Leisure Markets**
 - Public Houses
 - Hotels
 - Holiday Parks
 - Theme Parks
- **Swimming Pools**
- **Boat Decking Surfaces**
- **Rest Homes**



Drive Restore™

Restoring Driveways to their Natural Beauty

Most resin bound surfaces lose their glossy aesthetic over time due to weathering, leaving a matte natural aggregate finish. The Resin Mill offer a unique solution that will revive and extend the life of tired looking resin bound surfaces.

Drive Restore is an economic hardwearing spray-able, UV stable polyurethane sealer. It is applied through a pressurised canister, providing a tough layer of glossy sealant to restore and extend the life of a surface. Application is user friendly with a 3-meter hose so there is no need to bend down to the drive. Drive Restore will also maintain SuDS compliance.

As well as dramatically enhancing the look of driveways, paths and other large decorative areas, when laid with crushed glass, Drive Restore increases the anti-slip resistance of the surface.

Drive Restore is:

- **Completely Unique**
- **Quickly and easily applied with a pressurised canister**
- **Hardwearing**
- **UV Resistant**
- **Minimises costs through the spray application and reducing on site time**
- **Has outstanding anti-skid properties when installed with our anti-skid material**
- **80% more economical than a traditional roller coat product (based on QUV testing)***



Both of the above driveways were laid at the same time. Both have been heavily utilised and had excessive vehicle traffic over a 9-year period. With a quick and simple application of Drive Restore, the aesthetic look of the driveway on the left hand side has been dramatically improved.



Samples

Samples are the key to instilling confidence in the surface you are going to install. The Resin Mill samples give a true indication of the high quality of both the resin and the aggregate when combined. This enables you to assess the final colour and texture of the resin bound aggregate and determine which is the preferred colour for your project.

Whilst we have a vast range of colours, bespoke resin bound mixtures can be created upon request. For the professional, samples are shown in The Resin Mill presentation briefcase alongside company and technical information.

Samples and sample cases are available for our resin bound, rubber crumb and internal resin. If you would like a sample of any of our resin colours, please give us a call on **01484 400 855**.





The Resin Mill Training Courses are industry leading and are highly recommend by the leading governing bodies.

At The School of Resin, our in-house training academy, we professionally educate newcomers as well as experienced contractors on the benefits of resin bound systems and the installation, sharing our specialist knowledge. The resin bound training courses at The School of Resin are market-leading, resulting in some of the most talented individuals in the resin bound driveway industry. Upon completion of our courses, we are confident that contractors will be highly competent, with the ability to install to a highly professional standard.

This is achieved through an in-depth course including in-classroom learning, theory, calculations, hands on preparation and practical. The School of Resin plays a pivotal role in our Approved Installer Scheme, ensuring our contractors are certified to The Resin Mill high standards. All contractors have to adequately pass the courses in order to be Resin Mill certified.

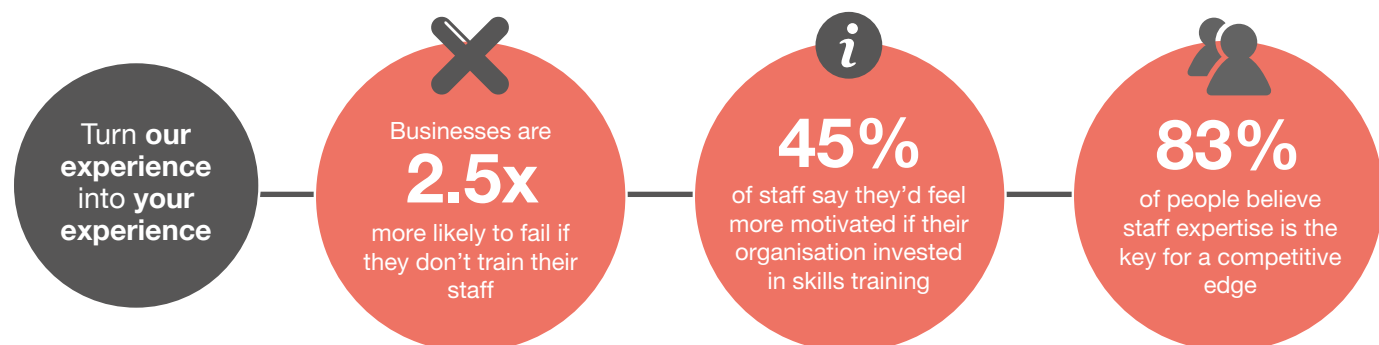
The training covers all subject areas including preparing and laying the resin materials, measuring quantities, other surfacing materials, the costly slip ups that could be made, legalities, environment and sustainability and how to distinguish between quality and sub-standard resin materials.

During the practical, contractors learn the latest techniques and best site practice to ensure a high quality consistent finish.

The experience and depth of training is fantastic

Great businesses need great people & training

5 star training from the very start to the finish



Benefits of The Resin Mill Training:

Market-Leading

The Resin Mill are the market-leaders in resin bound training, making recommendations to industry governing bodies and offering the latest teaching methods. In a growing market it's essential to have the best and most innovative education available.

Expertise

We are FeRFA approved supplier and through years of installing, communicating and dealing with people in the industry the team have seen where the jobs go wrong and are in the best position to advise how to avoid the pitfalls in the industry.

Communication

Our aftercare is second to none. We keep our participants up-to-date with industry news and any changes in legislation, as well as the latest tips of the trade, ensuring they pursue best practice and represent the industry in a professional manner, as well as laying resin bound surfacing to the highest quality. Ongoing advice is free and part of the service we offer.

Transparency

We give accurate information on the industry, with relative and transparent information on everything through from pricing to market expectations. You will have around the clock support and access to data sheets and brochures.



Perhaps you are an experienced paving specialist, plasterer or landscaper that's looking to join the fastest growing sector in the construction industry, or perhaps you are considering a career change to resin bound permeable paving. Perhaps you are a national company looking to train several teams. No matter the situation, at The School of Resin we have courses to facilitate all backgrounds and requirements.

If you would like to find out more about the courses available at The School of Resin, or if you would like to apply for a place, please call us on **01484 400 855**, or email your details and a little bit about yourself and any experience to **info@theresinmill.co.uk** or post to our **Facebook page**.

Our Associations

What it means for you as a business



Constructionline members go through a vigorous selection process and have to complete a series of pre-qualifications. This allows suppliers, contractors and buyers to purchase with ease and confidence, knowing that standards will be un-compromised. Constructionline ensures ease of functionality for the user, in order to optimise performance, minimise risk and realise opportunities.

Procurement can be a time consuming task and Constructionline streamlines that process as companies have already been vetted.

Being a member of Constructionline gives confidence and credibility to purchases of our resin bound kits and also the end user, who is having a resin bound surface laid.

Both suppliers of resin bound and contractors can join Constructionline, should they be able to meet the high specification requirements.



FeRFA is the official and sole organisation for the resin flooring industry. FeRFA outlines best practice and policies with members agreeing, complying and abiding by the 'Codes of Practice'.

Members of FeRFA must operate to the highest standard of quality, integrity, safety and reliability. Membership is a benchmark for the industry and associated companies offer resin flooring systems and services of the highest quality.

Being involved with FeRFA gives consumers and contractors the assurance they need when deciding what materials and companies to use and choose.

Confidence is instilled when using FeRFA assured companies as they must have set standards including outstanding facilities and technical staff who can provide on site technical support and offer training.

Accredited Installer Scheme

The aim of our mission is clear. We want the resin bound industry to thrive, with positive connotations attached to it. By supplying the highest quality materials alongside a trustworthy and professional installation company, we can ensure that your resin bound surfaces will not only look great but last for years to come. The installer plays a crucial part in this, in that they have to install the resin bound correctly and under the appropriate guidelines.

Our Approved Installer scheme assures you that your contractor has been trained significantly and achieved the correct credentials and skillset with a gallery of examples of their work and testimonials for your perusal.

The Resin Mill Approved Installers are situated across the whole of the UK. You can be sure that you are getting the best install from a local company near you who hold the same values that we do. We only partner with the industry elites, ensuring a streamlined process with multiple benefits to homeowners.

All our approved installers

- Have been Resin Mill trained and certified
- Have a 100% client satisfaction record
- Are monitored and vetted by our program
- Local businesses near to you
- Can install domestic, commercial & industrial projects
- Work with the highest quality materials
- Offer a precise, superior quality, reliable & durable surface

Our Assurance

- Written confirmation of any quotation
- An estimated start date
- An estimate of the time required completing the job
- Fully trained contractors
- Option of the best insurance backed warranty in industry
- Fully guaranteed insurance



Sustainable Urban Drainage System (SuDS)

The Resin Mill's resin bound permeable paving is a Sustainable Urban Drainage System (SuDS) that deals with surface water run-off in an environmentally friendly way, mimicking natural drainage by allowing water to drain through the surface.

Once the flexible two-part polyurethane resin has been mixed and combined with the aggregates, each particle of the aggregate will have been coated in high quality resin.

The nature of this system is an open matrix, which allows water to disperse quickly. It mimics natural drainage by allowing water to pass through to the sub-base enabling flood prevention and water contamination.

Since October 2008, legislation states that any paving at the front of a property has to be permeable and SuDS compliant.

Sustainability

The Resin Mill take the environment and sustainability very seriously. We are committed in leading the permeable paving industry in minimising the impact of our activities on the environment.

We have a responsibility to the earth to make sure that we are socially responsible in the products we use and the solutions and services that we offer.

The key points of our strategy to achieve our Company Environmental Policy are as follows:

- Minimise waste by evaluating operations and ensuring they are as efficient as possible.
- Minimise toxic emissions through the selection and use of our fleet and power requirement.
- Work towards 100% recycling both internally and with our stakeholders.
- Source products to minimise the environmental impact of both production and distribution.
- Meet or exceed all the environmental legislation that relates to the company and review industry best practice.
- Climate change is at the forefront of our policy and so we endeavour to act in the best interests of climate change at all times.

The Key To A Great Install

Forced Action Mixer

A Forced Action Mixer is essential for mixing together the aggregate and the resin. The mixing stage is often cited as the stage that is most likely to go wrong during an install and therefore it is imperative that the materials are thoroughly mixed. If the materials are inadequately mixed the final surface will

have colour variances and patchy areas. The paddles and the pan shape of the machine are designed in a particular way to combine the elements together in an even manner, without any clumping or dry spots. It is this method that allows for a consistent finish.



Our Client Base

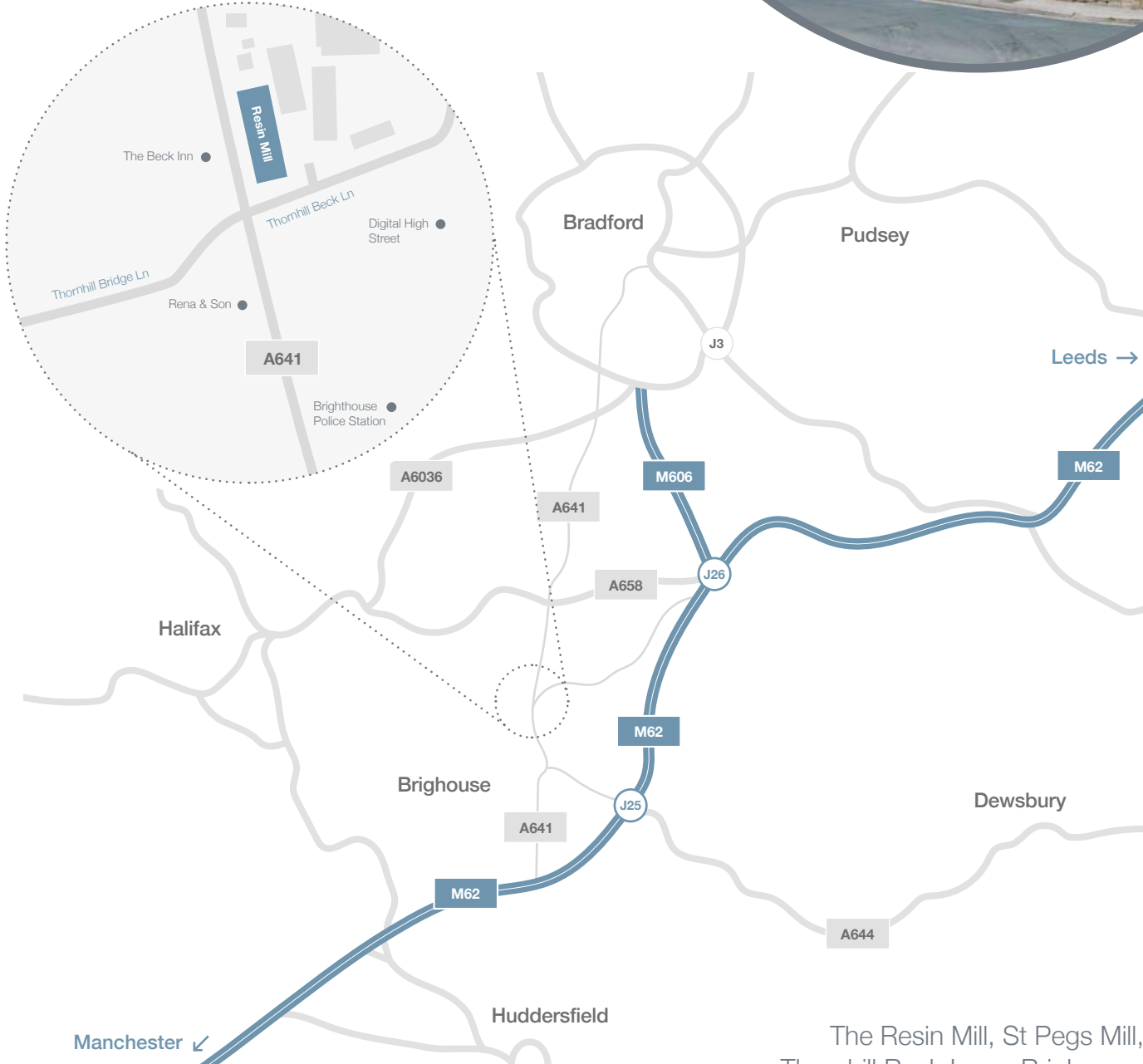
We supply our quality resin bound systems to clients throughout the country, from well known builders merchants such as Jewson and gibbs & dandy to city councils and architects.



Why Not Pop In And See For Yourself?

One of the easiest ways to view our products is to pop in and visit us in person. You will find all of the textures, colours and finishes you could ever need to make those important decisions concerning choosing a resin material to invest in.

It's the perfect way to get an insight of how your new investment will look and feel.



The Resin Mill, St Pegs Mill,
Thornhill Beck Lane, Brighouse,
West Yorkshire HD6 4AH



t: 01484 400 855
e: info@theresinmill.co.uk

The Resin Mill, St Pegs Mill, Thornhill Beck Lane,
Brighouse, West Yorkshire HD6 4AH



[theresinmill](https://www.facebook.com/theresinmill)



[@TheResinMill](https://twitter.com/TheResinMill)



[The Resin Mill Ltd](https://www.linkedin.com/company/TheResinMill)



[The Resin Mill Ltd](https://plus.google.com/+TheResinMill)



www.theresinmill.co.uk